



EMPLOYABILITY FOR 21ST CENTURY WORK

24TH MAY 2018 TOURISM BUILDING, CIT

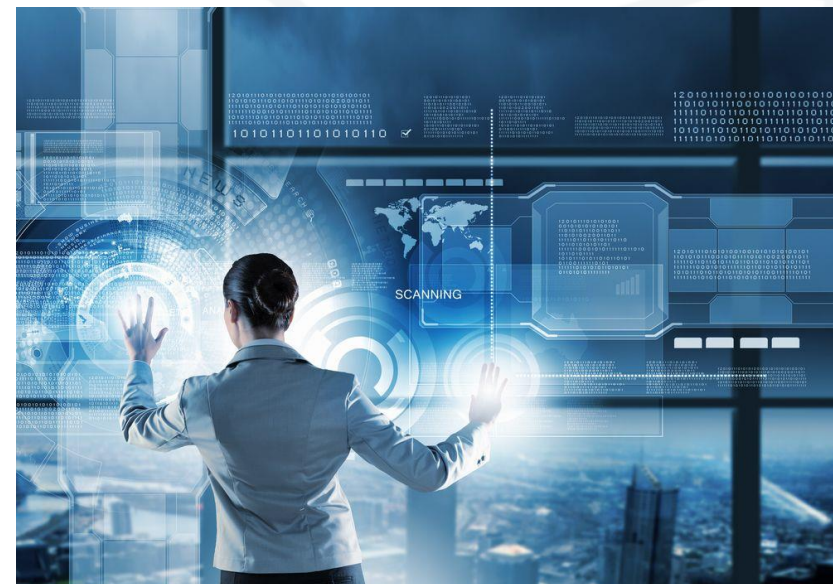


TREASA MORGAN,

Careers Officer, CIT

ÁINE NÍ SHÉ,

Registrar & Vice President for
Academic Affairs, CIT



Career Development
Facilitate Insight

Transitions
Provoke Thought

Advice



‘Did you know, in 2028? This is the future!’

https://www.youtube.com/watch?v=Zsyw0RYiD_I



DELLEMC

Poppulo

flex™



— GO BEYOND —

MUSGRAVE
RETAIL PARTNERS IRELAND





“Change is inevitable. Change is constant.”

Benjamin Disraeli

“People will try to tell you that all the great opportunities have been snapped up. In reality, the world changes every second, blowing new opportunities in all directions, including yours.”

Ken Hakuta



THANK YOU!